



ARTWORK DELIVERY INSTRUCTIONS

DATA TRANSMISSION BY

- Wetransfer or Hightail.
- CD or DVD.
- E-mail (<10MB)

Transmission of electronic files is quicker and more reliable if the files are compressed. To transfer files, first collect and compress them into a single archive using Stuffit for Mac or WinZip for PC.

ARTWORK FILE FORMAT



Illustrator CS5.5

Artwork to be supplied on positional drawing, layered and with all fonts outlined.
Remove all unused colors in artwork.
All images should be linked to the illustrator file.



Photoshop CS5.5

All relevant images to be supplied in CMYK @ 300ppi and 100% with any relevant channels included.
All images should be **layered** so that we can made distortions easily.



PDF

PDF files can be supplied for visual purposes only allowing Helios Packaging to make any relevant comments regarding the design before final artwork is supplied.

ARTWORK SPECIFICATIONS



Text Size

Text weight minimum is 5pt for positive & 6pt for reversed out.

Stroke Size

Stroke weight minimum is 0.15mm positive and 0.2mm reversed out.

Text color

Black text must be in overprint except when printing on metallic colors (zilver, gold).

Registration

Grips are added to designs to minimise the register movements of individual colours through the press to avoid visible mis-register on the final print.

Grips/Hold Backs

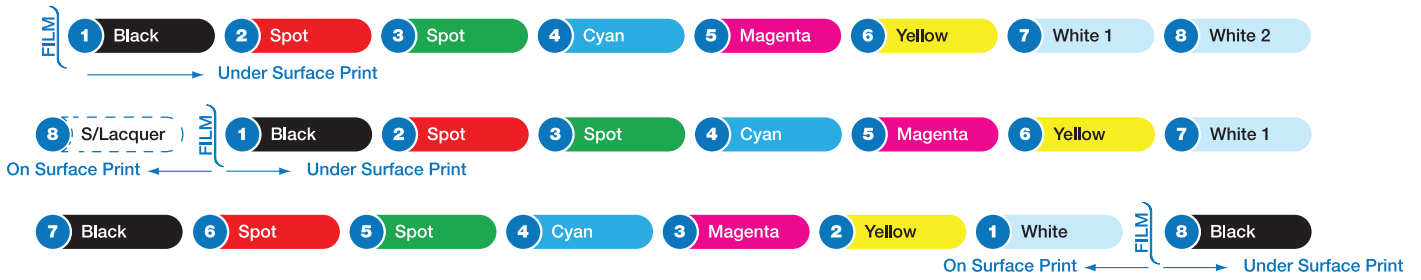
Grips/Hold backs unless specifically stated on drawing are 0.15mm - 0.20mm.



Number of Colors

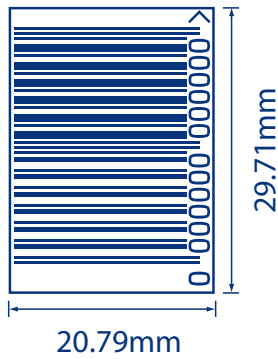
All Presses can print a maximum of 8 colors including white(s) for opacity and lacquers or varnishes.

Colour sequence as follows:



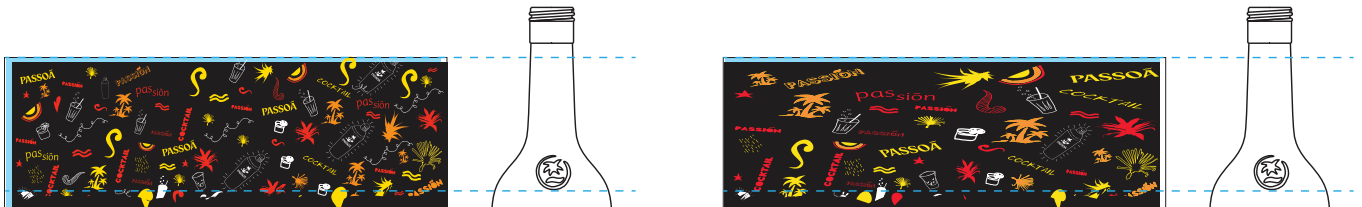
Barcodes

Minimum recommended size is 80% magnification always place vertically.



Pre-distortion

Helios Packaging can manipulate artwork as necessary to ensure designs are pre-distorted to render satisfactory on products after shrinkage has been applied.



Screens/Screen Angles

Please see tabel below for Flexo Screens & Screen Angles.

	Screen Angles	LPI round dots	Minimum Dot
Cyan	7°	175	2%
Magenta	67°	175	2%
Yellow	82°	175	2%
Black	37°	175	2%
White	37°	80	2%
Spot Colors	37°	120	2%